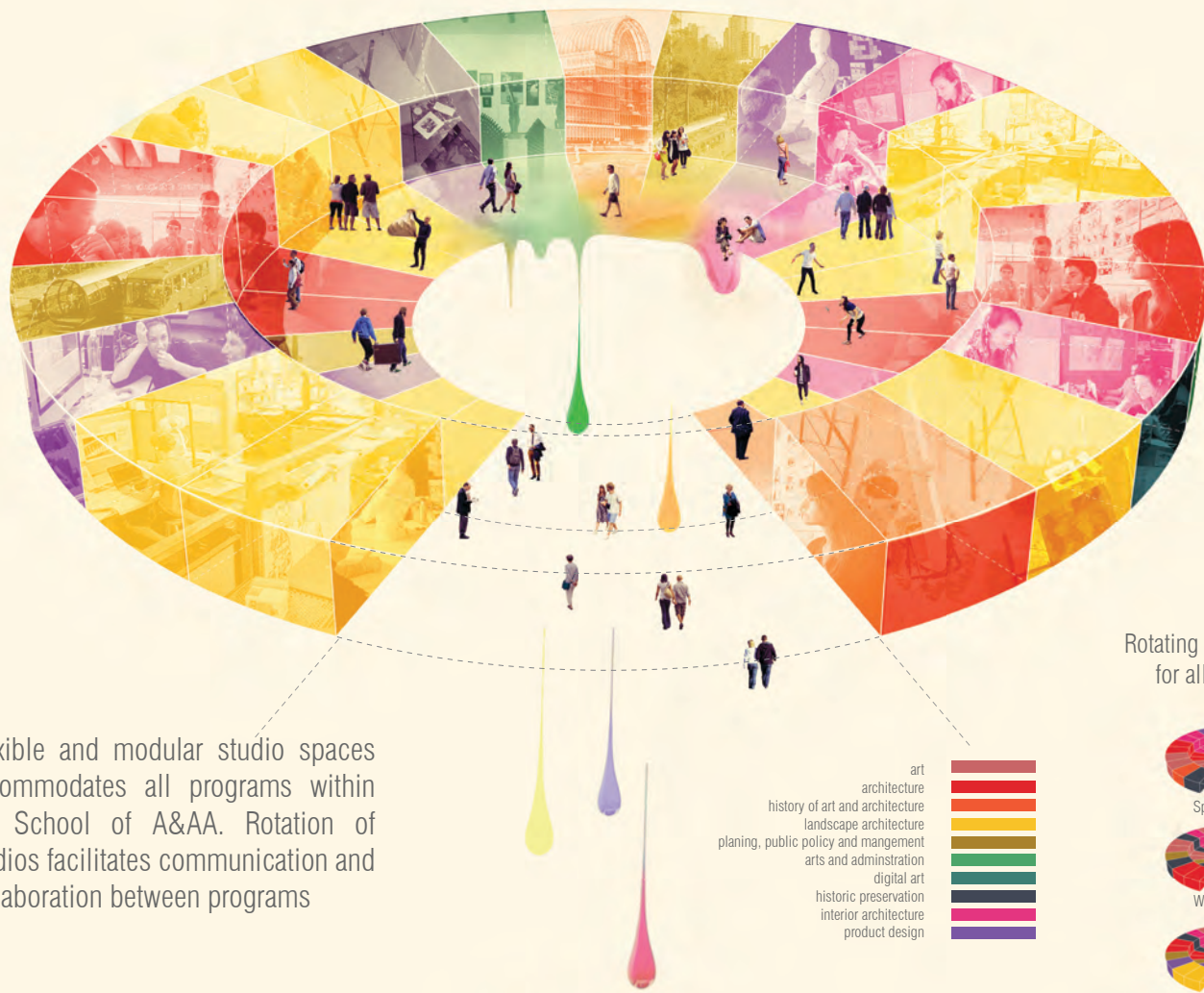


TOWARDS A COLLABORATIVE FUTURE



Flexible and modular studio spaces accommodates all programs within the School of A&AA. Rotation of studios facilitates communication and collaboration between programs

Rotating studio spaces for all programs

art
architecture
history of art and architecture
landscape architecture
planning, public policy and management
arts and administration
digital art
historic preservation
interior architecture
product design



As our world becomes increasingly complex, education must give professionals access to highly diverse knowledge. The path toward holistic thinking is through collaboration and effective dialogue across disciplines.

Our school can become a hub of innovation, where future professionals become active citizens, working together to improve the connectedness of nature and people toward a future of unbridled possibility. We believe that these relationships - among people, and between people and the environment are the keys to creating a new set of transformative educational experiences at the A+AA.

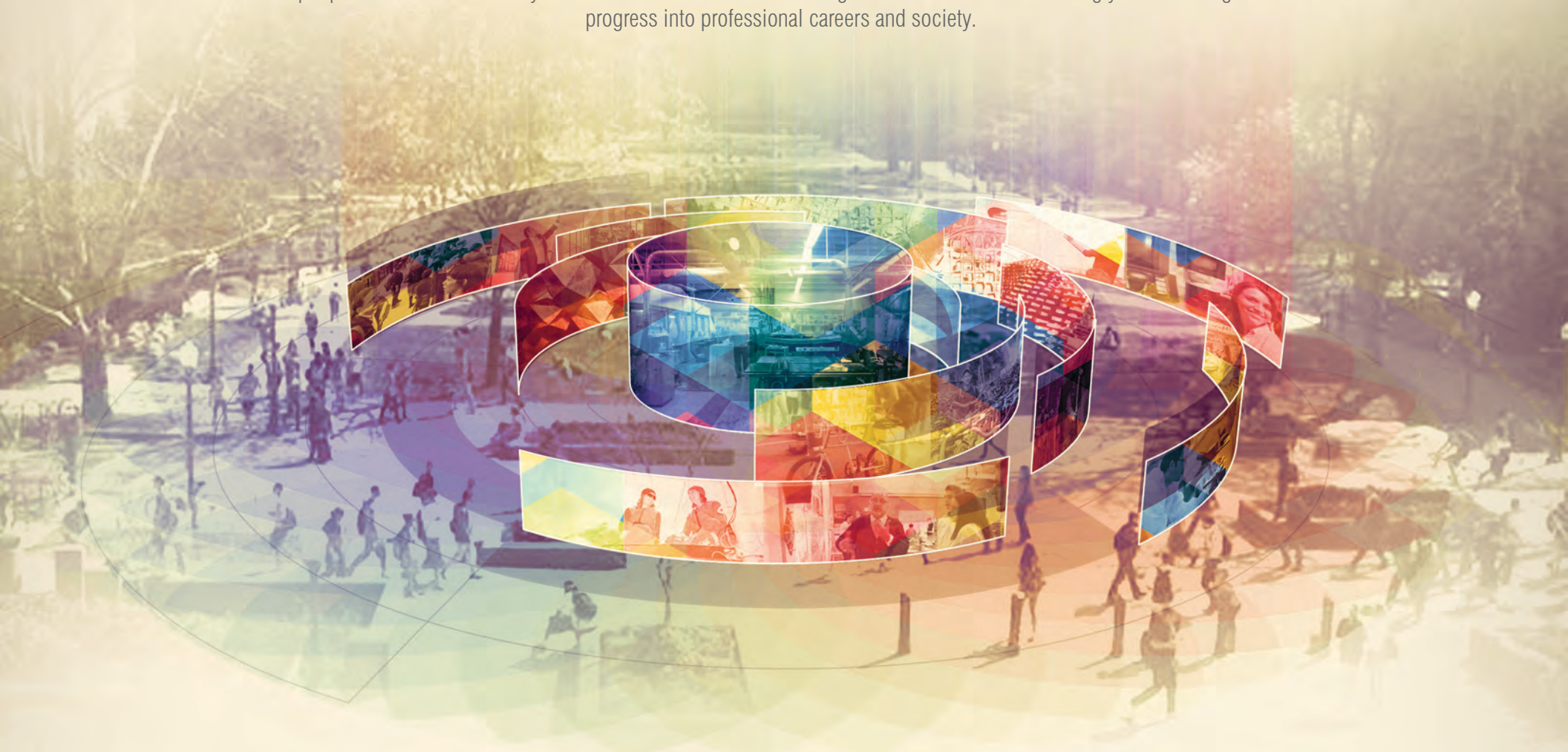
Our vision for the future of the A+AA takes inspiration from the fluidity and organization of the color wheel. Incorporating the full spectrum of visible light, this age-old artists' tool balances and blends its components. It is a complete whole, the sum of equal parts. For us, it is a symbol of what can become a comprehensive and integrative approach to education and problem solving.

Our new model for education must incentivize collaboration so that it becomes a preferred method of teaching and acquisition of knowledge. Toward this objective, every department must be given equal access to space and resources, and most importantly all must have equal strength in voice.

EPICENTER OF EXCHANGE

Interactions between students and faculty of different disciplines should be encouraged in both intentional and spontaneous ways. We envision an 'Epicenter of Exchange' as a place for all disciplines within the A+AA and across the university to apply their knowledge, trade ideas and share inspiration.

Central and accessible, the Epicenter of Exchange is adjacent to and augments other communal resources like the library, shop and output room, which encourage students to work together. It is also a place for partnerships with local businesses, nonprofit, and governmental agencies. As such, it balances academic experience with opportunities to meet and collaborate with people outside the university. Connections made with external agencies will become increasingly valuable as graduates progress into professional careers and society.



Display of student work from across disciplines engages visitors and promotes awareness of a broad mode of thinking. Here, students propose their own projects and seek collaboration from across disciplines.



LIVING LABORATORY

We believe that an education structured to amplify relationships between built and natural environments gives students an opportunity to understand and transform their individual and collective impact. We envision for the new A+AA a 'Living Laboratory,' created as a place for innovation, testing and showcasing new ideas relating to cultural and ecological sustainability. Run by a core group within the A+AA, people across the university and surrounding community are invited to participate in projects developed in the Living Lab.

The Living Laboratory becomes a launching pad for the development of the whole school, where natural and human-made systems are highly integrated. One objective of the Living Laboratory is to track school-wide consumption of energy and other resources, and to make the data accessible to all. From increased awareness of environmental impact will follow immediate and long-term evolution in user behavior and building performance.



"Sound Hub" utilize technology to capture and transform environmental data into tangible sounds. Thus, it reveals and reconstruct our otherwise broken relationship with nature.

Ripples display an individual's carbon footprint that is collected through personal mobile devices.

CULTIVATE YOUR EDUCATION

We envision a progressive approach where students are empowered to build their own education. Each generation is encouraged to contribute to the growth of the A+AA and the education of future students. While adapting traditions of the past, we innovate and build on accumulated knowledge. Active engagement in our education means taking responsibility and building programs of study that are flexible and tailored to an individual's interests, background and strengths.

A basic framework begins in the foundational year. Cross-disciplinary exposure and self-motivated learning are promoted early on, giving students ample access to programs outside their intended major of study. As students progress through their respective programs, they are encouraged to design their own educational trajectories. Students are welcomed to participate in projects and initiatives that relate to team-building, personalization of spaces and programs, and growth of the A+AA.



Students become owners of their education. They demand new technology and new modes of thinking and ultimately help advance the education.